

FTSE/JSE DIVIDEND+ INDEX

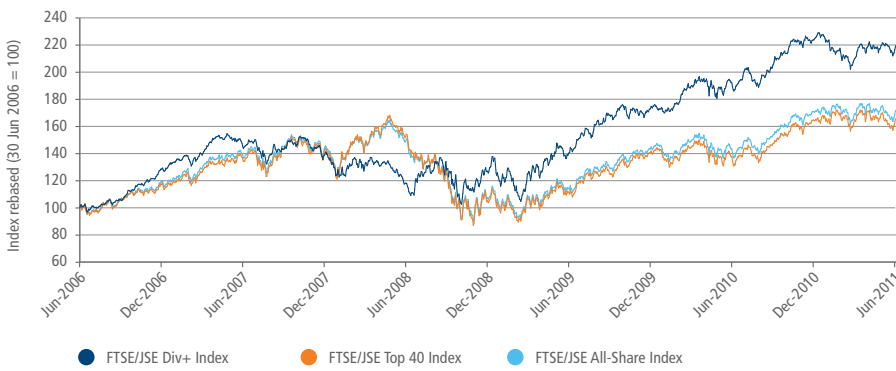
FTSE Group and JSE Limited have launched the FTSE/JSE Dividend+ Index, a yield-weighted index designed to measure the performance of higher yielding stocks within the large and mid-cap universe of the FTSE/JSE All-Share Index.

The FTSE/JSE Dividend+ Index selects the top 30 stocks by one-year forecast dividend yield. The constituents' weightings within the index are determined by their dividend yield as opposed to market capitalisation. The index was created to allow investors to capture the long-term effect of higher compounding returns and benefit from the lower correlations to traditional market cap weighted indices.

FEATURES

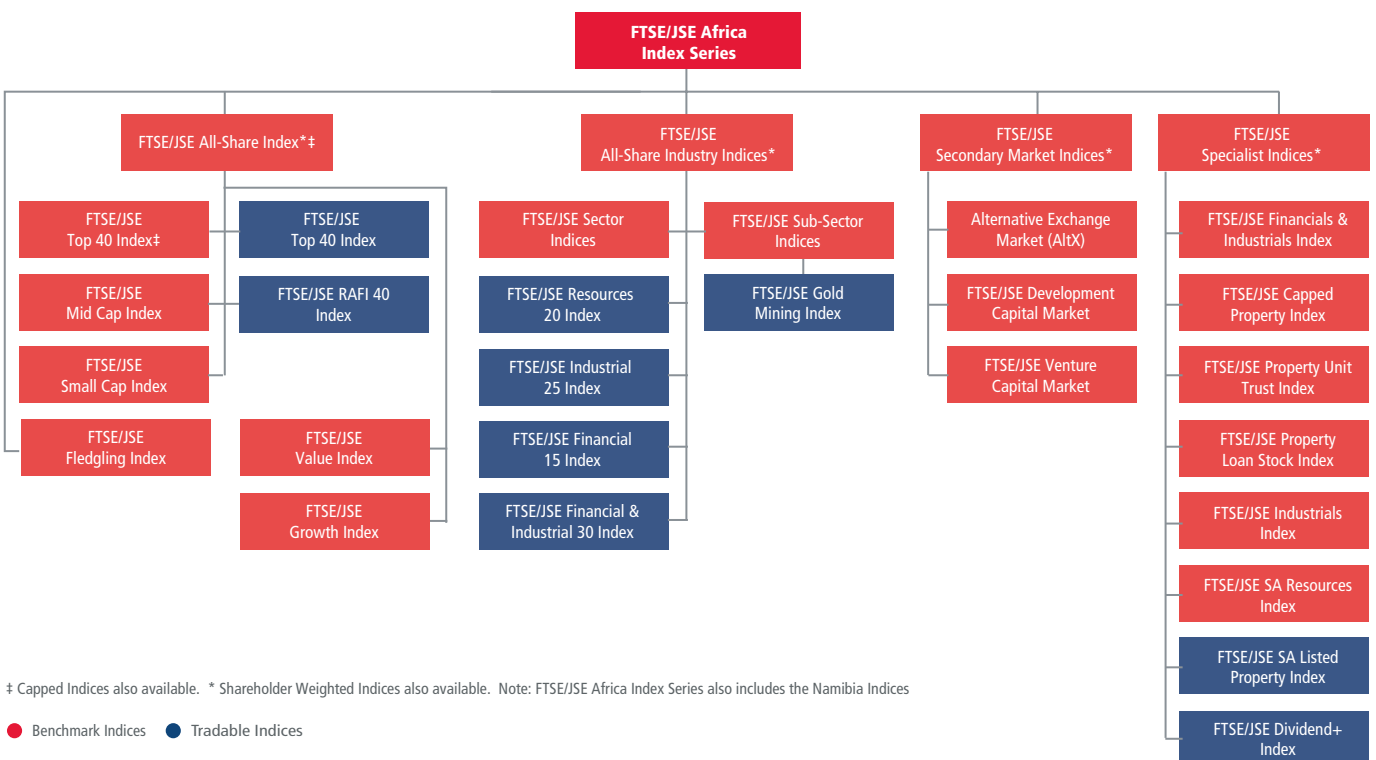
- The index measures the performance of the 30 higher yielding stocks within the universe of the FTSE/JSE Top 40 Index and FTSE/JSE Mid Cap Index, excluding real estate companies
- The index caters for both the South African domestic and international markets
- Stocks are weighted by one-year forecast dividend yield as opposed to market capitalisation
- Stocks are liquidity screened to ensure that the index is tradable
- The index is calculated in accordance with the Industry Classification Benchmark, the global standard for industry sector analysis
- The index is suitable for the creation of financial products, such as index funds, warrants, certificates and Exchange Traded Funds (ETFs)

FTSE/JSE DIVIDEND+ INDEX FIVE YEAR TOTAL RETURN PERFORMANCE



SOURCE: FTSE Group, data as at 30 June, 2011

FTSE/JSE AFRICA INDEX SERIES FAMILY TREE



‡ Capped Indices also available. * Shareholder Weighted Indices also available. Note: FTSE/JSE Africa Index Series also includes the Namibia Indices

● Benchmark Indices ● Tradable Indices

FTSE/JSE DIVIDEND+ INDEX TOP 10 CONSTITUENTS

Rank	Security	Supersector	Net Mkt Cap (ZARm)	Index Weight (%)
1	Coronation Fund Managers	Financial Services	53,678	5.82
2	Brait SA	Financial Services	51,236	5.56
3	Pretoria Portland Cement	Construction & Materials	44,012	4.77
4	Liberty Hldgs.	Insurance	41,458	4.50
5	MMI Holdings	Insurance	41,095	4.46
6	Allied Technologies	Telecommunications	37,263	4.04
7	African Bank Invest	Financial Services	35,597	3.86
8	Lewis Group	Retail	35,317	3.83
9	Vodacom Group	Telecommunications	32,467	3.52
10	Nampak	Industrial Goods & Services	31,974	3.47
Total			404,098	43.82

SOURCE: FTSE Group, data as at 30 June, 2011

FTSE/JSE DIVIDEND+ INDEX ICB SECTOR BREAKDOWN

ICB Code	Sector	No. Cons	FTSE/JSE Dividend+ Index Mkt Cap (ZARm)	Index Weight (%)
1750	Industrial Metals & Mining	1	18,753	2.03
1770	Mining	1	18,897	2.05
2350	Construction & Materials	1	44,012	4.77
2720	General Industrials	1	31,974	3.47
2730	Electronic & Electrical Equipment	1	31,168	3.38
2770	Industrial Transportation	1	22,148	2.40
3570	Food Producers	2	50,158	5.44
5330	Food & Drug Retailers	2	51,285	5.56
5370	General Retailers	5	143,331	15.54
6530	Fixed Line Telecommunications	1	21,456	2.33
6570	Mobile Telecommunications	3	98,873	10.72
8350	Banks	3	79,758	8.65
8570	Life Insurance	3	110,807	12.02
8770	Financial Services	5	199,540	21.64
Total			922,161	100.00

SOURCE: FTSE Group, data as at 30 June, 2011

FTSE/JSE DIVIDEND+ INDEX PERFORMANCE TABLE (ZAR TOTAL RETURN)

	PERFORMANCE								VOLATILITY		
	3M (%)	6M (%)	YTD (%)	12M (%)	3YR (%)	5YR (%)	3YR (%pa)	5YR (%pa)	1YR Vol (%pa)*	3YR Vol (%pa)**	5YR Vol (%pa)***
FTSE/JSE Dividend+ Index	1.8	-2.9	-2.9	17.5	86.9	119.8	23.2	17.1	11.4	23.4	17.7
FTSE/JSE Top 40 Index	-1.3	0.9	0.9	25.7	7.6	66.0	2.5	10.7	16.6	26.5	19.4
FTSE/JSE All-Share Index	-0.6	0.5	0.5	24.6	14.0	71.9	4.5	11.4	14.9	24.3	18.4

SOURCE: FTSE Group, data as at 30 June, 2011

* Based on daily annualised total returns using 252 trading days in a year

** Based on weekly annualised total returns using 52 weeks (Wednesday to Wednesday)

*** Based on monthly annualised total returns

FTSE/JSE DIVIDEND+ INDEX VS BENCHMARKS FIVE YEAR CORRELATION

	FTSE/JSE Dividend+ Index	FTSE/JSE Top 40 Index	FTSE/JSE All-Share Index
FTSE/JSE Dividend+ Index	1.000	0.705	0.754
FTSE/JSE Top 40 Index		1.000	0.996
FTSE/JSE All-Share Index			1.000

Note: Based on 5-year monthly total returns

Source: FTSE Group, data as at 30 June, 2011

INFORMATION
Index Universe
 FTSE/JSE Africa Index Series

Index Launch
 21st August 2006

Base Date
 31 December 2001

Base Value
 100

Investability Screen
 Free float and liquidity

Index Calculation
 Real-time, every 15 seconds (ZAR), and end-of-day (HKD, CNY & USD)

End-of-Day Distribution
 Indices available by 17:30 GMT or BST via FTP and e-mail

Weighting
 Top 30 stocks by 1-year forecast dividend yield

Currency
 South African Rand (ZAR)

Dividend Information
 Provided by McGregor BFA

Review Dates
 June & December

Index Rules
 Available at www.ftse.com/jse
www.ftse.jse.co.za
Vendor Codes
 Available at www.ftse.com/jse
Factsheet Data
 Source: FTSE Group, data as at 30 June, 2011

© FTSE International Limited ("FTSE") 2011. All rights in the FTSE/JSE Dividend+ Index vest in FTSE International Limited ("FTSE") and JSE Limited ("JSE"). "FTSE" is a trademark of the London Stock Exchange Plc and The Financial Times Limited and is used by FTSE under licence. "JSE" is a trade mark of JSE Limited. Neither FTSE nor JSE shall be liable (including in negligence) for any loss arising out of use of the FTSE/JSE Dividend+ Index by any person. All information is provided for information purposes only and no responsibility or liability can be accepted by FTSE or JSE for any errors or for any loss from use of this publication. All rights, including copyright, in this report shall vest in FTSE. No part of this publication may be reproduced, stored in a retrieval system or transmitted by any other form or means whether electronic, mechanical, photocopying, recording or otherwise without the prior written consent of FTSE. Distribution of FTSE index values and the use of FTSE indices to create financial products requires a licence from FTSE and/or its licensors.



FOR FURTHER INFORMATION VISIT WWW.FTSE.COM, EMAIL INFO@FTSE.COM OR CALL YOUR LOCAL FTSE OFFICE:
 BEIJING +86 (10) 8587 7722 DUBAI +971 4 319 9901 HONG KONG +852 2164 3333 LONDON +44 (0) 20 7866 1810
 MILAN +39 02 3604 6953 MUMBAI +91 22 6649 4180 NEW YORK (DOMESTIC TOLL-FREE) + 1 888 FTSE (3873)
 PARIS +33 (0)1 53 76 82 89 SAN FRANCISCO +1 888 747 FTSE (3873) SYDNEY +61 (2) 9293 2864 TOKYO +81 (3) 3581 2811

