

FTSE Global Equity Index Series

Built for the demands of global investors

Indexes for a global market

The FTSE Global Equity Index Series (FTSE GEIS) includes objective, rules-based benchmarks designed to comprehensively represent the investable global equity market. FTSE GEIS encompasses a global perspective based upon knowledge gained through developing local benchmarks around the world, creating a clearer view of the global equity market. Whether you seek coverage of the broad global market or a particular region, country or industry based on the Industry Classification Benchmark (ICB) framework, FTSE Russell provides insights and tools relevant to your investment process.

Features

- Coverage of more than 7,700 stocks in 47 countries, covering 98% of the world's total investable market capitalization
- Rules-based transparent approach to index construction
- Incorporates liquidity screens, free float minimums, and additional tests to ensure ease of replication
- Governance structure that includes a board of internal experts supported by external advisory committees

Results

- Representative and Modular: Captures particular regions, markets, asset classes, styles, and strategies
- Transparent: Provides an unbiased representation of the global equity universe
- Investable: Excludes small, illiquid stocks that are not typically considered by institutional investors due to size, liquidity or other constraints.
- Relevant: Ensures the integrity and adaptability of the indexes

About FTSE Russell

FTSE Russell is a leading global provider of benchmarking, analytics and data solutions. A comprehensive range of indexes provides investors worldwide with the tools required to measure and analyze markets across asset classes, styles or strategies.

Key headline indexes

FTSE All-World®
FTSE Developed
FTSE Emerging
FTSE Global All Cap
FTSE Global Small Cap
FTSE All-World® ex US
FTSE All-World® ex UK
FTSE All-World® ex Japan
FTSE Developed ex US
FTSE North America
FTSE Asia Pacific
FTSE Developed Europe

Reflecting best practices

When constructing global indexes, the aim is to achieve accurate and investable universe coverage while maintaining consistency and integrity. The index construction methodology has evolved over time to reflect best practices as capital markets have expanded and developed. Methodology enhancements have been implemented consistently across all indexes, providing investors with an easily understandable framework for analyzing equity portfolios and managing funds based on active or passive mandates.

Representation and coverage: FTSE Global Equity Index Series

FTSE Developed

\$43.6 trillion net market cap
~5,658 stocks

FTSE Emerging

\$4.6 trillion net market cap
~2,065 stocks

FTSE Global Small Cap

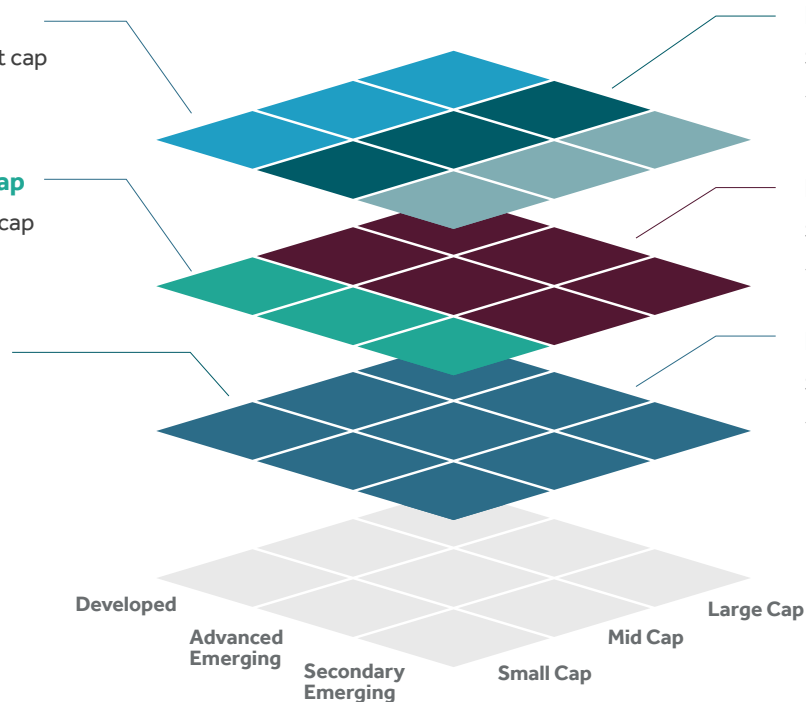
\$5.7 trillion net market cap
~4,600 stocks

FTSE All-World®

\$42.4 trillion net market cap
~3,100 large & mid cap stocks

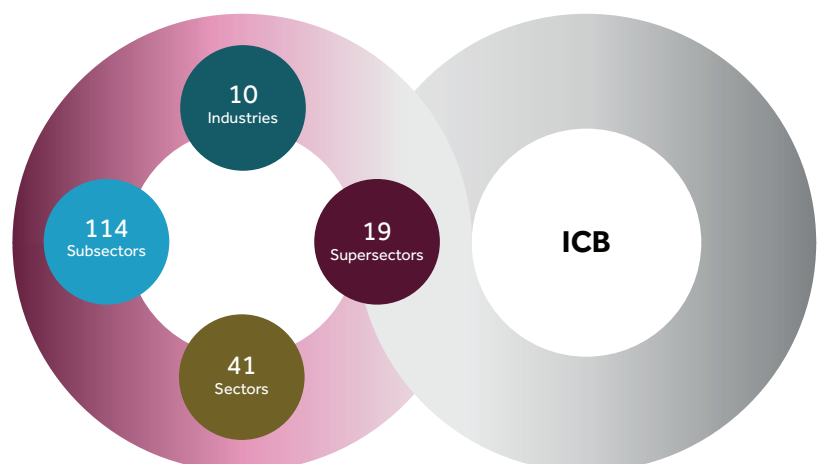
FTSE Global All Cap

\$48.2 trillion net market cap
~7,700 large, mid, & small cap stocks



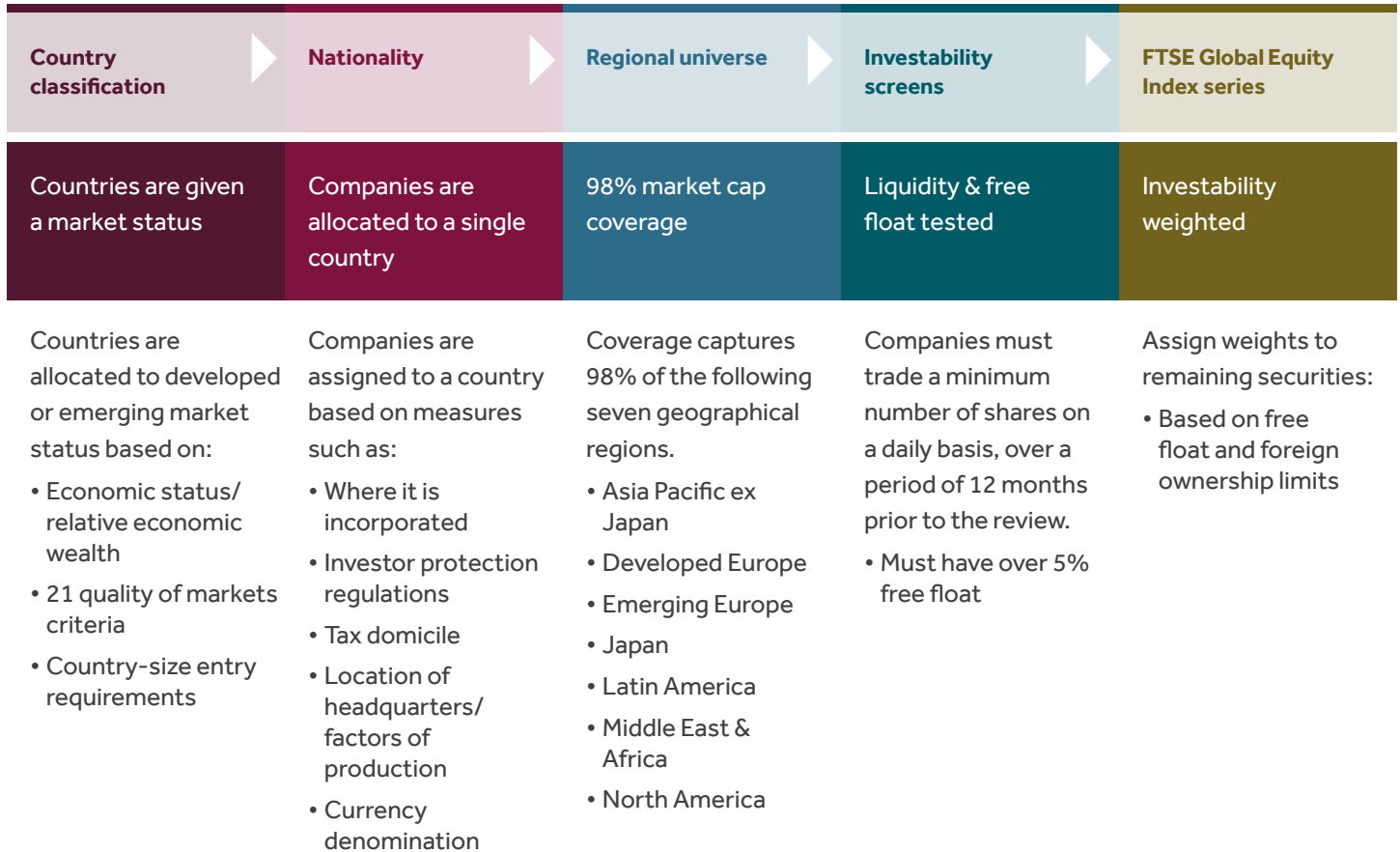
ICB: a comprehensive sector classification scheme

Used as a base for FTSE GEIS, the Industry Classification Benchmark (ICB) allocates companies to the subsector that most closely represents the nature of its business, which is determined by its primary source of revenue and other publicly available information. Our modular index design supports a broad spectrum of sub-indexes based on country, region, sector, size or other customized needs.



Index review process

With approximately 70,000 equity securities traded worldwide, the FTSE GEIS index review process is applied to capture the global investable universe. Through removing ineligible securities, applying size and liquidity screens and ranking remaining securities in descending order by total market cap, the FTSE GEIS remains, covering 98% of the world’s investable universe, with 47 countries and approximately 7,700 securities.



Source: FTSE Russell. For illustrative purposes only. For more information please see the FTSE Global Equity Index Series Ground Rules.

Unique, four-layer market classification system

The economic characteristics of many countries today place them in an “in-between” category — not clearly defined as an Emerging market country but not yet qualified as a Developed market. The Advanced Emerging and Secondary Emerging categories, which are unique to FTSE GEIS, allow for further segmentation of the investable universe and provide added flexibility for portfolio design. FTSE Russell classifies 24 countries as Developed, 23 countries as Emerging and 29 countries as Frontier. In addition to the FTSE Global All Cap Index, each country is available as its own modular index. Country classifications are reviewed on a semi-annual basis each March and September.



As of September 2017

* Poland to be promoted to Developed market status, effective from September 2018.

** Kuwait to be promoted from Unclassified to Secondary Emerging market status, commencing from September 2018.

For more information please visit: <http://www.ftse.com/products/indices/country-classification>

For more information about our indexes, please visit ftserussell.com.

© 2017 London Stock Exchange Group plc and its applicable group undertakings (the "LSE Group"). The LSE Group includes (1) FTSE International Limited ("FTSE"), (2) Frank Russell Company ("Russell"), (3) FTSE TMX Global Debt Capital Markets Inc. and FTSE TMX Global Debt Capital Markets Limited (together, "FTSE TMX"), (4) MTSNext Limited ("MTSNext") and (5) Mergent, Inc. ("Mergent"). All rights reserved.

FTSE Russell® is a trading name of FTSE, Russell, FTSE TMX, MTS Next Limited and Mergent. "FTSE®", "Russell®", "FTSE Russell®", "MTS®", "FTSE TMX®", "FTSE4Good®", "ICB®", "Mergent®" and all other trademarks and service marks used herein (whether registered or unregistered) are trademarks and/or service marks owned or licensed by the applicable member of the LSE Group or their respective licensors and are owned, or used under licence, by FTSE, Russell, MTSNext, FTSE TMX, or Mergent.

All information is provided for information purposes only. All information and data contained in this publication is obtained by the LSE Group, from sources believed by it to be accurate and reliable. Because of the possibility of human and mechanical error as well as other factors, however, such information and data is provided "as is" without warranty of any kind. No member of the LSE Group nor their respective directors, officers, employees, partners or licensors make any claim, prediction, warranty or representation whatsoever, expressly or impliedly, either as to the accuracy, timeliness, completeness, merchantability of any information or of results to be obtained from the use of the FTSE Russell products or the fitness or suitability of the products for any particular purpose to which they might be put. Any representation of historical data accessible through FTSE Russell is provided for information purposes only and is not a reliable indicator of future performance.

No responsibility or liability can be accepted by any member of the LSE Group nor their respective directors, officers, employees, partners or licensors for (a) any loss or damage in whole or in part caused by, resulting from, or relating to any error (negligent or otherwise) or other circumstance involved in procuring, collecting, compiling, interpreting, analysing, editing, transcribing, transmitting, communicating or delivering any such information or data or from use of this material or links to this material or (b) any direct, indirect, special, consequential or incidental damages whatsoever, even if any member of the LSE Group is advised in advance of the possibility of such damages, resulting from the use of, or inability to use, such information.

No member of the LSE Group nor their respective directors, officers, employees, partners or licensors provide investment advice and nothing contained in this material or accessible through FTSE Russell, including statistical data and industry reports, should be taken as constituting financial or investment advice or a financial promotion.

This publication may contain forward-looking assessments. These are based upon a number of assumptions concerning future conditions that ultimately may prove to be inaccurate. Such forward-looking assessments are subject to risks and uncertainties and may be affected by various factors that may cause actual results to differ materially. No member of the LSE Group nor their licensors assume any duty to and do not undertake to update forward-looking assessments.

No part of this information may be reproduced, stored in a retrieval system or transmitted in any form or by any means, electronic, mechanical, photocopying, recording or otherwise, without prior written permission of the applicable member of the LSE Group. Use and distribution of the LSE Group data requires a licence from FTSE, Russell, FTSE TMX, MTSNext, Mergent and/or their respective licensors.

About FTSE Russell

FTSE Russell is a leading global index provider creating and managing a wide range of indexes, data and analytic solutions to meet client needs across asset classes, style and strategies. Covering 98% of the investable market, FTSE Russell indexes offer a true picture of global markets, combined with the specialist knowledge gained from developing local benchmarks around the world.

FTSE Russell index expertise and products are used extensively by institutional and retail investors globally. For over 30 years, leading asset owners, asset managers, ETF providers and investment banks have chosen FTSE Russell indexes to benchmark their investment performance and create investment funds, ETFs, structured products and index-based derivatives. FTSE Russell indexes also provide clients with tools for asset allocation, investment strategy analysis and risk management.

A core set of universal principles guides FTSE Russell index design and management: a transparent rules-based methodology is informed by independent committees of leading market participants. FTSE Russell is focused on index innovation and customer partnership applying the highest industry standards and embracing the IOSCO Principles. FTSE Russell is wholly owned by London Stock Exchange Group.

For more information, visit ftserussell.com.

To learn more, visit ftserussell.com; email info@ftserussell.com; or call your regional Client Service Team office:

EMEA

+44 (0) 20 7866 1810

North America

+1 877 503 6437

Asia-Pacific

Hong Kong +852 2164 3333

Tokyo +81 3 3581 2764

Sydney +61 (0) 2 8823 3521